



P347

In the several examples that follow, watch for some more spectacular pieces and unusual effects. Note, too, how often this type of pattern is woven in blue and red.

**OV63** D362-D363, P346-P347 ■

First Impressions:

A gem - probably the ultimate in this type of patterning. Nine bright red roses are separated by little dark blue connectors and this whole cluster alternates with a pretty, deep blue table. The natural ground is linen, warp-wise and cotton, weft-wise. This fragment has a tape fringe, a simple outer border - and the “pièce de résistance” - a second bottom border with the loveliest little pine trees woven in! The two tabbies between each pattern shot give it all a crisp, clean look. Pine trees on four harness Overshot? Seldom seen, but possible - and here it is.

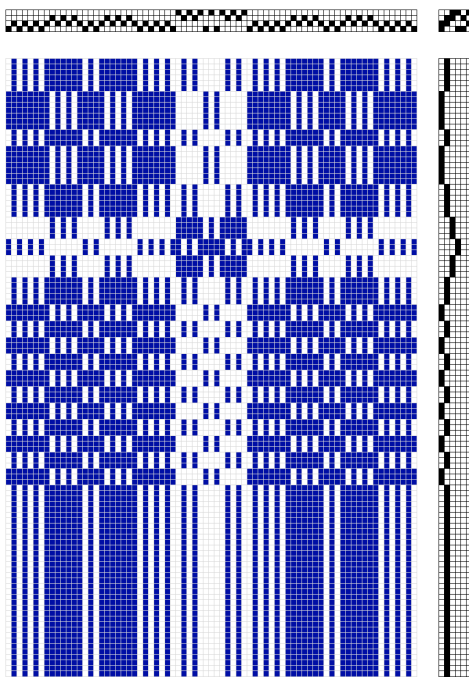
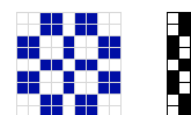
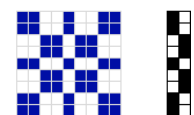
Later:

Pine trees - as soon as I saw them on the fragment offered to me, I knew I had to have every scrap of that coverlet that was still recoverable.

Together, Frances Lynch of Walkersville, Maryland and I searched her shop until we found a bottom border, corner, fringe, scrap of the top and a scrap that was the full width of a panel, 34 1/4”. With all of this, most of the coverlet’s vital statistics are discernible.

Those pine trees are clever and rare, yet easy to weave. Each pine tree is threaded to a star or rose motif ▶.

Instead of treading them in the usual Star or Rose fashion and getting the star or rose shown below, right, an unorthodox treading is used. The inner B blocks are used for the tree trunk and treadled over and over again until the trunk is high enough. The bottom leaves are now made with a few shots of the A block, then B, A, B, A until the weaver’s tree is full enough. The finale is a few shots on the B block - and there’s your tree! ◀ D363 ■



D363

So intriguing is this idea to me that I have since woven an assortment of placemats and wall hangings - all sporting four harness Overshot pine trees!